

2011

Revision

The Upper Desert Resource Guide

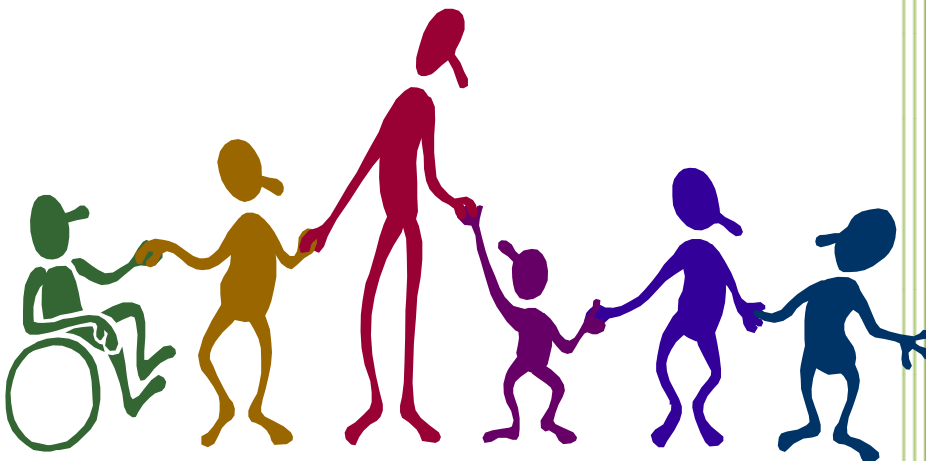


Courtesy of:

Inland Regional Center



San Bernardino School Age
Upper Desert Unit



DISCLAIMER

This resource guide was developed to provide information only and does not recommend, endorse, guarantee, or promote the services and interventions described.

**Inland Regional Center
P.O. Box 6127
San Bernardino, CA 92412
(909) 890-3000
www.inlandrc.org**

TABLE OF CONTENTS

☞ COMMUNITY RESOURCES.....	4
☞ DENTAL SERVICES.....	5
☞ EDUCATIONAL PROGRAMS.....	6
➤ ALTERNATIVE SCHOOLS.....	7
☞ EDUCATIONAL RIGHTS	8
➤ IDEA: INDIVIDUALS WITH DISABILITIES ACT	9
☞ EMERGENCY ASSISTANCE	10
➤ DISASTER PREPAREDNESS	11
➤ NATIONAL HOTLINES	12
☞ GOVERNMENTAL SERVICES	13
☞ LEGAL SERVICES	14
☞ MEDICAL SERVICES.....	15
➤ SPECIALTY CARE	17
➤ MEDI-CAL INSURANCE	19
➤ MEDI-CAL OPTIONS	20
☞ MEDICAL SUPPLIES	21
☞ MENTAL HEALTH	22
☞ RESPITE SERVICES	23
☞ SUPPORT SERVICES	24
INLAND REGIONAL CENTER	25
☞ TRANSPORTATION	26
APPENDIX I: COMMONLY USED TERMS	27
APPENDIX II: REGIONAL CENTER QUALIFYING CONDITIONS	
☞ AUTISM	29
➤ AUTISM PROGRAMS	30
☞ CEREBRAL PALSY	31
☞ EPILEPSY	32
☞ INTELLECTUAL DISABILITY	33
☞ LIST SERV/PARENT TO PARENT NETWORK FORM	34
APPENDIX III: SPECIAL EDUCATION	
☞ 18 TIPS FOR GETTING QUALITY SPECIAL EDUCATION SERVICES FOR FOUR CHILD	35
☞ REQUEST FOR IEP SAMPLE LETTER	36
☞ COMPLIANCE COMPLIANT SAMPLE LETTER.....	37
☞ REQUEST FOR COMPLIANT INVESTIGATION FORM.....	38
☞ DUE PROCESS HEARING REQUEST SAMPLE LETTER.....	40



COMMUNITY RESOURCES

Apple Valley American Little League
(760) 247-5441

Boy Scouts of America
(909) 793-2463

Challenger High Desert Little League
(760) 253-7767

Girl Scouts of Victorville
(760) 241-3558

Hesperia American Little League
(760) 261-4627

Hesperia American Youth Soccer Organization (AYSO)
(760) 261-3355

High Desert Youth Center
15411 Village Rd
Victorville 92392
(760) 245-7805

Mojave River Valley Special Opportunities
16292 Lime St.
Hesperia 92345
(760) 244-7518

Rising Stars Horseback Riding
1155 Lilac St
Phelan 92371
Pat Morris: (909) 987-9403
Barbara McCormick: (760) 244-3676

Southern California Special Olympics
San Bernardino County Regional
(760) 245-9669
www.sosc.org/inlandempireregion.html

US Adaptive Recreation Center
43101 Goldmine Dr
P.O. Box 2897
Big Bear Lake 92315
(909) 584-0269
www.usarc.org

Victorville American Youth Soccer Organization (AYSO)
13680 Bear Valley Rd, Ste E4
Victorville, 92392
(760) 241-2320 or (760) 927-9027
www.soccer.org

Libraries

Adelanto Branch Library
11497 Bartlett Ave.
Adelanto 92301
(760) 246-5661

Adelanto Community Resource Center
11824 Air Expressway
Adelanto 92301
(760) 246-8401

Barstow Branch Library
304 E. Buena Vista
Barstow 92311
(760) 256-4850

Hesperia Branch Library
9650 7th Ave
Hesperia 92345
(760) 244-5427

Needles Branch Library
1699 Bailey
Needles 92363
(760) 326-5643

Newton T. Bass Apple Valley Branch Library
14901 Dale Evans Parkway
Apple Valley 92307
(760) 240-70

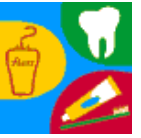
Parks & Recreation

Apple Valley Parks & Recreation
14955 Dale Evans Pkwy
Apple Valley 92307
(760) 240-7880

Barstow Parks & Recreation
(760) 256-5617

Hesperia Parks & Recreation
16392 Lime St.
Hesperia 92345
(760) 244-5488

Victorville Parks & Recreation
14973 Joshua St
Victorville 92392
(760) 245-5551



DENTAL SERVICES

This list does not constitute a recommendation of any one dentist. This is a resource list for information only.

REFERRAL SERVICES

1-800-DENTIST

1-800-336-8478

Dental Care of San Bernardino

(909) 888-1301

Medi-Cal Dentist Beneficiaries Medical Group

7667 Folsom Blvd, Sacramento

Mail: PO Box 15539

Sacramento, CA 95852-1539

(800) 322-6384

www.denti-cal.ca.gov

Western Dental Center

(888) 811-5111 ext. 38

Refers to Western Dental Centers

www.westerndental.com

Victor Valley Community Dental Service

14357 7th St

Victorville 92392

(760) 951-9181

General Dentistry

Apple Valley Dental

21580 Bear Valley Rd.

Apple Valley 92308

(760) 247- 8007

Dr. Paul Bell

12637 Hesperia Rd, Ste A

Victorville 92395

(760) 245-8684

Desert Dental Children's Center

19195 Highway 18, Ste #201

Apple Valley 92307

(760) 242-0796

or 15209 Bear Valley Rd

Hesperia 92345

(760) 244-1666

or 12640 Hesperia Rd

Victorville 92395

(760) 241-3336

or 945 Armory Rd, Suite C

Barstow 92311

(760) 252-7070

Desert Valley Dental Group

17247 Main St.

Hesperia 92345

(760) 244-2324

Golden Dental Group

11949 Hesperia Rd.

Hesperia 92345

(760) 244-1212

or 927 Armory Rd

Barstow 92311

(760) 252-4488

Just For Kids Dentistry

104 E. Olive Ave

Redlands 92373

(909) 798-0604

www.just4kidsdentistry.com

Dr. Samuel Ko

15263 Hook Blvd, Ste D

Victorville 92394

(760) 952-3756

Dr. Sungho Lee

570 Virginia Way

Barstow 92311

(760) 255-1070

Liberty Village Dental

13790 Bear Valley Rd

Victorville 92392

(760) 955-2273

Loma Linda Specialty Care Dentistry

11092 Anderson Dr

Loma Linda, CA 92350

(909) 558-4689

Surgery Center

(909) 558-4663

Redlands Children Dental Group

308 W. State St, Ste 4A

Redlands 92373

(909) 798-2755

Redlands Dental Surgery Clinic

1180 Nevada St., Ste 100

Redlands 92374

(909) 335-0474

Dr. Karen Richards

307 E. Buena Vista

Barstow 92311

(760) 256-2402

Victor Valley Community Dental

15528 7th St.

Victorville 92392

(760) 961-0100

Victorville Family Dentistry

14495 7th St.

Victorville 92392

(760) 245-7800



School Districts

Adelanto School District

11824 Air Base Rd.
P.O. Box 70
Adelanto 92301
(760) 246-8691
www.sbcss.k12.ca.us/adelanto

Apple Valley Unified School District

12555 Navajo Rd.
Apple Valley 92308
(760) 247-8001
www.avusd.org

Barstow Unified School District

551 S. Avenue H
Barstow 92311
(760) 255-6000
www.barstow.k12.ca.us

Helendale School District

15350 Riverview Rd
P.O. Box 249
Helendale 92342-9723
(760) 952-1180
www.sbcss.k12.ca.us/helendale

Hesperia Unified School District

15576 Main Street
Hesperia 92345
(760) 244-4411
www.hesperia.k12.ca.us

Lucerne Valley Unified School District

10790 Barstow Rd.
Lucerne Valley 92356
(760) 248-6108
www.lvusd.k12.ca.us

Needles Unified School District

1900 Erin Drive
Needles 92363
(760) 326-3891
www.needles.k12.ca.us

Oro Grande School District

19175 Third Street
P.O. Box 386
Oro Grande 92368
(760) 245-9260
www.orogrande.net

Silver Valley Unified School District

35320 Daggett-Yermo Road
P.O. Box 847
Yermo 92398-0847
(760) 254-2916
www.silvervalley.k12.ca.us

Snowline Joint Unified School District

4075 Nielson Road
P.O. Box 296000
Phelan 92329
(760) 868-5817
www.snowline.k12.ca.us

Victor Elementary School District

15579 Eighth St.
Victorville 92392
(760) 245-1691
www.vesd.net

Victor Valley Union High School District

16350 Mojave Drive
Victorville 92392
(760) 955-3200
www.vvuhsd.org

County Programs

San Bernardino County Superintendent of School (SBCSS)

15822 Willow Street
Hesperia 92345
(760) 244-6131
www.sbcss.k12.ca.us

Desert/Mountain Operations

17800 Highway 18
Apple Valley 92307
(760) 242-6322



EDUCATION PROGRAMS: ALTERNATIVE SCHOOLS

Charter Schools

Academy for Academic Excellence (K-12)

(also known as The Lewis Center)

17500 Mana Road
Apple Valley 92307
(760) 946-5414

Adelanto Charter Academy

17537 Montezuma St
Adelanto 92301
(760) 669-6485

Encore Performing and Visual Arts (7-12)

16955 Lemon Street
Hesperia 92345
(760) 956-2632

Crosswalk: Pathways to College (K-8)

9144 Third Ave
Hesperia 92345
(760) 949-2327

Crosswalk: Higher Education Learning (9-12)

12601 Jacaranda
Hesperia 92345
(760) 949-2006

Excelsior Education Center (7-12)

12217 Spring Valley Parkway
Victorville 92395
(760) 245-4448

High Desert Academy of Applied Arts & Science (7-12)

15411 Village Drive
Victorville 92394
(760) 843-7445

LaVerne Preparatory Academy (K-6)

9608 I Avenue
Hesperia 92345
(760) 948-4333

Lucrene Valley Career Academy (9-12)

8560 Aliento Rd
Lucrene Valley
(760) 248-7659

Mirus Secondary School (7-12)

14073 Main Street, Ste 103
Hesperia 92345
(760) 244-3764

Mountain View Montessori School (K-6)

12900 Amethyst Road
Victorville 92392
(760) 947-0006

Online Public Schools

www.k12.com

Options for Youth (K-12)

15048 Bear Valley Road, Ste E & F
Victorville 92392
(626) 685-9300

Riverside Preparatory School (K-12)

19175 Third St
Oro Grande 92368
(7600) 243-5884

Sixth Street Prep School (K-6)

15476 Sixth Street
Victorville 92392
(760) 241-0962

Summit Leadership Academy (9-12)

12850 Muscatel Street
Hesperia 92345
(760) 949-9202

Community Colleges

Barstow Community College

2700 Barstow Rd
Barstow 92311
(760) 252-2411
www.barstow.edu

Victor Valley Community College

18422 Bear Valley Rd
Victorville 92395
(7600) 245-4271
www.vvc.edu

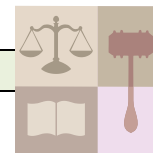
Non-Public Schools

High Desert Haven

15954 Chiwi Road
Apple Valley, CA 92307-1285
(760) 946-5235

Mojave Bridge Academy

(formerly UHS)
12199 Industrial Blvd.
Victorville, CA 92395
(760) 241-8386



Special Education Rights

California State Dept. of Education

1430 N Street
Sacramento 95814
(916) 327-3536
www.cde.ca.gov

Desert/Mountain SELPA

Special Education Local Plan Area

17800 Highway 18
Apple Valley 92307
(760) 242-6333

☞ SELPA is created under any of the planning options of the Education Code. The SELPA collaborates with county agencies & school districts to develop and maintain environments in which special needs students and families can live and succeed.

<http://dmselpa.sbcss.k12.ca.us/>

Disability Rights California

3580 Wilshire Blvd., Suite 902
Los Angeles, CA 90010-2512
(213) 427-8747
(800) 776-5746 toll free
(213) 427-8767 Fax
www.disabilityrightscalifornia.org

Disability Rights Legal Center

Inland Empire Program

Heather McGunigle, Esq
320 East D. Street
Ontario 91764
(909) 460-2034
(909) 460-2094 Fax
www.disabilityrightslegalcenter.org

Office of Clients' Rights Advocacy

Veronica Cervantes, CRA
Beatriz Reyes, Asst CRA
1585 South D Street, Ste 106
San Bernardino 92408
(909) 890-4770
(909) 890-4765

Special Education Consultant

Sandra Marzullo
985 Kendall Dr., #193
San Bernardino 92407
(909) 856-6418

TASK: Team of Advocates for Special Kids

Elias Alvarado: (909) 890-9560
Delia Lopez: (909) 890-9630
100 West Cerritos Ave.
Anaheim 92805
(714) 533-8275
(866) 828-TASK (toll-free)
www.task.ca.org

Publications

IDEA 2004

The federal special education mandate which state law is based on.

California Composite of Laws

This is the language of special education law in the state of California. Any parent with a child in special education is entitled to order a free copy of this book of laws.

Special Education Rights and Responsibilities

☞ Written by Protection & Advocacy (now Disability Rights California), this 12-chapter book uses a question & answer format to help you understand your rights and responsibilities under the special education law in California. This book is available online at the Disability Rights California web site, www.disabilityrightscalifornia.org.

Websites

IDEA 2004

<http://idea.ed.gov/>

Composite of Law Database

<http://www.cde.ca.gov/sp/se/ds/>

Wrights Law Special Education

A helpful web site created by an attorney who specializes in special education law.
<http://www.wrightslaw.com>

Free IEP Goals & Objectives

www.iep4u.com



EDUCATION RIGHTS: IDEA: INDIVIDUALS WITH DISABILITIES EDUCATION ACT



What is Special Education?

Special Education is an integral part of the total public education system & provides education in a way that promotes maximum interaction between children with & without disabilities, in a manner that is appropriate to both. It provides a full continuum of program options to meet the education & service needs of individuals with special needs in the least restrictive environment. The rights & protections are guaranteed under the individuals with Disabilities Education Act (IDEA).

IDEA provides four major rights:

Free and Appropriate Public Education (FAPE): Your child with special needs, between the ages of 0 to 22, must receive an education program specially designed to meet his or her unique learning needs, provided at no cost to you.

Placement in the “Least Restrictive Environment” (LRE): Children with exceptional needs should receive their education in age-appropriate environment with non-disabled peers. This principle maintains that children with & without special needs are most successfully educated in a shared environment where qualities of understanding, cooperation and mutual respect are nurtured.

Fair Assessment Procedures: Assessment is the first step toward deciding whether or not a child needs special education and, if so, what services will be provided. No assessment can be done without your permission, and you must receive an assessment plan in writing that requires your approval.

Parent Involvement in Educational Decisions: The law provides for your involvement as a partner in the assessment, placement & evaluation of your child.

It also provides two protections:

A Written Individual Education Program (IEP): When your child receives special education services, a written IEP must be developed & reviewed each year at a meeting in which you have a right to participate, and should attend. You must also approve this document.

The Right of Due Process: This is a safeguard that protects your right as a parent or guardian to disagree with educational decision made for your child.

For More Information

For a copy of your Special Education Rights and Responsibilities Handbook, visit www.caseadvocacy.org or www.pai-ca.org, or contact your Inland Regional Center Consumer Services Coordinator.

- Refer to **Appendix III: Special Education** for:
Sample Letters,
18 Effective IEP tips,
and Compliant Form



EMERGENCY ASSISTANCE AND SERVICES
FOR EMERGENCIES, CALL 9-1-1



Charities/Emergency Information

American Red Cross

16248 Desert Knoll Drive
Victorville 92395
(760) 245-6511 or
(760) 256-9328

Catholic Charities

18300 Highway 18, Ste 700
Apple Valley 92307
(760) 242-2311, x8454

Desert Manna Ministries

209 N. First Avenue
Barstow 92311
(760) 256-7797

High Desert Domestic Violence Program

15075 Seventh Street
Victorville 92392
(760) 843-0701

High Desert Homeless Services

14049 Armargosa Rd
Victorville 92393
(760) 245-5991
www.highdeserthomelesservices.com

Home Energy Assistance Program

(800) 342-3009

Salvation Army

14585 La Paz Dr
Victorville 92392
(760) 245-2545
or Barstow: (760) 255-2182

Samaritan's Helping Hands

15527 8th Street
Victorville 92393
(760) 243-5933

Victims of Crime Resource Center

3200 Fifth Ave
Sacramento 95817
(800) 842-8467

Victorville Sexual Assault Services

15437 Anacapa Rd, Ste 8
Victorville 92392
(760) 952-0041 or (800) 656-4673
www.sbsas.org

Food Assistance

Angel Food Ministries

www.angelfoodministries.com

The Treasure Box

www.thetreasurebox.org

Victor Valley Christian Church Food Bank

11223 11th Avenue
Hesperia 92345
4th Friday: 3:00 – 4:30p

Sheriff Stations

Adelanto Sheriff's Station

11613 Barlett Ave
Adelanto 92301
(760) 246-1000

Apple Valley Sheriff's Station

14900 Dale Evans Parkway
Apple Valley 92307
(760) 240-7400

Barstow Sheriff's Station

225 East Mountain View
Barstow 92311
(760) 256-4838

Hesperia Sheriff's Station

9393 Sante Fe Ave, East
Hesperia 92345
(760) 947-1500

Lucerne Valley Sheriff's Station

32770 Old Woman Springs Road
Lucerne Valley 92356
(760) 248-7328

Phelan Sheriff's Station

4050 Phelan Road
Phelan 92371
(760) 249-3212

Victorville Sheriff's Station

14200 Armargosa Road
Victorville 92392
(760) 241-2911



EMERGENCY ASSISTANCE: DISASTER PREPAREDNESS



DISASTER PREPAREDNESS FOR PEOPLE WITH DISABILITIES

<http://www.redcross.org/museum/prepare.org/disabilities/disabilitiesprep.htm>

Disaster Preparedness for People With Disabilities has been designed to help people who have physical, visual, auditory, or cognitive disabilities to prepare for natural disasters and their consequences. Anyone who has a disability or anyone who works with, lives with, or assists a person with a disability can also use this information.

1. Know what kinds of **disasters** could happen in your area and consider what your **environment** might look like after one occurs. Certain resources or utilities may not be available and conditions could hamper your **independence**.
2. Complete a **personal assessment**. Decide what you will be able to do for yourself and what assistance you may need before, during and after a disaster (based on the disrupted environment, your capabilities and your limitations).
3. Create a **personal support network** of family, friends, relatives, neighbors, roommates and co-workers who could assist you at a moment's notice. Discuss your special needs with them, including evacuation plans and medical information lists.
4. Make an **emergency information list** so others will know whom to call if they find you unconscious, unable to speak or if they need to help you evacuate quickly. Include the names and numbers of out-of-town contacts, as well as everyone in your network.
5. Compile a **medical information list** that contains the names and numbers of your doctors, your medications, dosage instructions, and any existing conditions. Make note of your adaptive equipment, allergies, and any communication difficulties you may have.
6. Keep at least a **seven-day supply of medications** on hand. Ask your doctor or pharmacist what you should do if you cannot immediately get more. If you undergo treatments administered by a clinic or hospital, ask your provider how to prepare for a disruption caused by a disaster.
7. Install at least one **smoke alarm** on each level of your home and test them once a month. Know the location of main **utility cutoff valves** and learn how and when to disconnect them during an emergency. Identify **evacuation routes** and **safe places** to go during a disaster.
8. Complete a **summary checklist** to make sure that your personal disaster plan is comprehensive. Be sure to include your medical needs, evacuation routes, care plans for your service animals, an alternative place to stay, etc.
9. Keep a **disaster supply kit** in your home, car, workplace or anywhere you may spend your time. Include such items as food, water, a first aid kit, adaptive equipment, batteries, and supplies for your pets or service animals.
10. Make your **home or office** safer by checking hallways, stairwells, doorways, windows and other areas for hazards that may keep you from safely leaving a building during an emergency. Secure or remove furniture and objects that may block your path.



**EMERGENCY ASSISTANCE:
NATIONAL HOTLINES**



1736 Family Crisis Center
(310) 379-3620

AIDS Hotline
(800) 342-2437

Alcohol & Drug Helpline
(800) 729-6686

American Cancer Society
(800) 227-2345

American Heart Association
(800) 242-8721

American Lung Association
(800) 586-4872

Birth Defect Association
(800) 313-2232

California Youth Crisis Line
(800) 843-5200

Child Abuse Hotline
(800) 4-A-CHILD

Child Find of America, Inc
(800) 832-9119

Depression
(800) 421-4211

Domestic Violence
(800) 799-7233

Domestic Violence Hotline
(760) 949-4357 or (866) 770-7867

Drug Help
(800) 662-4357

Elder or Dependent Adult Abuse
(877) 565-2020

Family Helpline
(866) 475-1411

First Call for Help (24 hrs)
(760) 240-8255

Gay & Lesbian Hotline
(888) 843-4564

Habitat for Humanity
(760) 241-3733

Hepatitis Hotline
(800) 223-0179

Immunization Hotline
(800) 232-0233

National Center for Missing & Exploited Children
(800) 394-3366

National Hotline for Migrant Workers
(800) 234-8848

Parents under Stress
(800) 352-0528

Rape & Incest National Network
(800) 656-4673

Recovery Hotline
(800) 888-9383

Runaway Hotline
(800) 231-6946

Teen Line
(909) 885-4653

Tough Love International
(800) 333-1069

Shoplifters Anonymous
(800) 848-9595

Stuttering Foundation
(800) 992-9392

Suicide/Crisis Line
(800) 832-9119

Suicide Prevention Lifeline
(800) 273-TALK
www.suicidepreventionlifeline.org



GOVERNMENTAL SERVICES



California Children's Services (CCS)

150 Carousel Mall
San Bernardino 92415
(909) 387-8400

www.dhs.ca.gov/pcfh/cms/ccs

Victor Valley MTU
15922 Willow St.
Hesperia 92345
(760) 244-7999

- ☞ CCS is a California medical program for physically handicapped children who may need specialized medical services and/or equipment in order to bring the children to their maximum development.
- ☞ CCS Program Goals
 - * To locate California children who may need CCS specialized medical care
 - * To encourage California families with physically handicapped children to obtain the medical services necessary to bring about the maximum development of their children.
 - * To help California families with physically handicapped children to obtain the medical services necessary to bring about the maximum development of their children
 - * To help California families obtain medical treatment of the child's condition at the time care will be most effective.

Department of Children Services (DCS)

15400 Civic Drive
Victorville 92392
(760) 243-5227
Child Abuse Hotline: (877) 827-8724

- ☞ DCS provide appropriate services for children in state custody and at risk of custody, so these children can strive to reach their full potential as productive adults.

Department of Public Health

16453 Bear Valley Rd
Hesperia 92345
(760) 956-4400

www.sbcounty.gov/pubhlth

Disability Benefits 101

www.disabilitybenefits101.org

First 5 Commission of San Bernardino

330 N. D St, Ste 500
San Bernardino 92415
(909) 386-7706

www.first5sanbernardino.org

Healthy Families

(800) 880-5305

www.healthyfamilies.ca.gov

Housing Authority of the County of San Bernardino

715 East Brier Dr
San Bernardino 92408
(909) 890-0644

www.hacsb.com

Section 8 Victorville Office
15465 Seneca Rd
Victorville 92392
(760) 243-1043

In Home Support Services (IHSS)

17270 Bear Valley Rd, Ste 108
Victorville 92392
(760) 843-5100

or 536 E. Virginia Way
Barstow 92311

(760) 256-5544

www.hss.sbcounty.gov/pa/default.asp

- ☞ IHSS is a program which assists low-income, elderly, and disabled adults and children with extraordinary needs for care to remain in their own homes by providing personal care services and/or domestic services.

Kids N Care

14397 Amargosa Rd.
Victorville, CA 92392
(760) 245-0770 or (800) 722-1091

www.kidsncare.com

- ☞ Assistance with locating childcare providers as well as providing guidelines to follow when selecting child care.

San Bernardino County 2-1-1

Toll free Information & Referral
www.211sb.com

Social Security Office

13955 Park Ave, Ste 110
Victorville 92392
(760) 241-5009
(800) 772-1213

www.ssa.gov



LEGAL SERVICES



Dignity Group

Grady Jennings
1055 N. Euclid Ave
Ontario 91761
(888) DGNTY GRP (346-8947)
(909) 986-2420

Disability Rights California

3580 Wilshire Blvd., Suite 902
Los Angeles, CA 90010-2512
(213) 427-8747
(800) 776-5746 toll free
(213) 427-8767 Fax
www.disabilityrightsca.org

Disability Rights Center

320 East D. Street
Ontario 91764
(909) 460-2034

Inland Counties Legal Services

14196 Amargosa Rd, Ste K
Victorville 92392
(760) 241-7073
www.inlandlegal.org

Inland Fair Housing & Mediation Board for Landlords & Tenants

15465 Seneca Rd
Victorville 92392
(800) 321-0911

Robert B. Ehrenworth

3699 Wilshire Blvd, Ste 700
Los Angeles 90010
(213) 351-0412

Legal Aid Society

354 W. 6th Street
San Bernardino 92401
(909) 889-7328

Office of Clients' Rights Advocacy

Veronica Cervantes, CRA
Beatriz Reyes, Asst CRA
1585 South D Street, Ste 106
San Bernardino 92408
(909) 890-4770
(909) 890-4765

Roberts & Adams Attorneys at Law

Timothy A. Adams
20042 Beach Boulevard
Huntington Beach 92648
(714) 698-0239
www.edattorneys.com

San Bernardino County Bar Association & Lawyer Referral Service

555 N. Arrowhead
San Bernardino 92401
(909) 888-6791



MEDICAL SERVICES

This list does not constitute a recommendation of any one physician. This is a resource list for information only.



Hospitals

Arrowhead Regional Medical Center

400 N. Pepper Ave
Colton 92324
(909) 580-1000

www.arrowheadmedcenter.org

Barstow Community Hospital

555 S. 7th Ave
Barstow 92311
(760) 256-1761

www.barstowhospital.com

Desert Valley Medical Center

16850 Bear Valley Road
Victorville 92395
(760) 241-8000

www.dvmc.com

Kaiser Permanente Medical Center

9961 Sierra Ave
Fontana 92335
(909) 427-5000

www.kaiserpermanente.org

Loma Linda University Medical Center Loma Linda University Children's Hospital

11234 Anderson St
Loma Linda 92354
(909) 558-4000

www.llu.edu/lluch/

Shriners Hospital

3160 Geneva St
Los Angeles 90020
(800) 237-5055

www.shrinershq.org

St. Bernardino Medical Center

2101 N. waterman Ave
San Bernardino 92404
(909) 883-8711

www.stbernardinemedicalcenter.org

St. Mary Medical Center

18300 Highway 18
Apple Valley 92307
(760) 242-2311

www.stmaryapplevalley.com

Victor Valley Community Hospital

15248 11th Street
Victorville 92395
(760) 245-8691

www.vvch.org

General Medical Physician

Dr. David Ahn

Infinity Pediatrics Inc
11949 Hesperia Rd, Ste B
Hesperia 92345
(760) 956-8700

Dr. Michael Brams

18270 Siskiyou Rd
Apple Valley 92307
(760) 242-3677

Dr. Donald Case

412 S. 6th St
Barstow 92311
(760) 256-0213

Dr. Marcelino Calimlin

15247 11th Street, Ste 200
Victorville 92392
(760) 951-9985

Dr. Celestina DeLaCruz

15247 11th Street
Victorville 92395
(760) 245-1769

Family Practice Associates

Dr. Craig Mueller
11919 Hesperia Rd
Hesperia 92345
(760) 948-1454
or 15863 Kasota Rd
Apple Valley 92308
(760) 946-1100


Dr. Yung Fung

121 S. 7th Ave, Ste #A
Barstow 92311
(760) 256-2181



MEDICAL SERVICES (CONTINUED)

This list does not constitute a recommendation of any one physician. This is a resource list for information only.



General Medical Physicians

Dr. Vivek Gill

4383 Phelan Rd
Phelan 92371
(760) 868-1990

Dr. Richard Gordinier

3936 Phelan Rd, Ste F1
Phelan 92371
(760) 868-6622

Dr. Richard Jones

Vantage Medical Group
18660 Outer Hwy 18
Apple Valley 92307
(760) 946-2112

Dr. Iskenderian Kevork

16195 Siskiyou Rd
Apple Valley 92307
(760) 946-2070

Dr. James Krider

18182 Highway 18, Ste 105
Apple Valley 92308
(760) 242-1234

LaSalle Medical Clinic

16455 Main St
Hesperia 92345
(760) 947-2161

Dr. Joseph Maloney

18270 Siskiyou Rd
Apple Valley 92307
(760) 242-3677

Dr. Glenn Matney

12402 Industrial Blvd
Victorville 92395
(760) 245-9363

Dr. Ashok Melvani

12677 Hesperia Rd
Victorville 92395
(760) 962-1150

Dr. Mike's Walk-In Clinic

716 E. Main St
Barstow 92311
(760) 256-6426

Dr. Nirmala Murthy

18523 Corwin Rd
Apple Valley 92308
(760) 242-3000

Dr. Perlita Naco

15203 11th St
Victorville 92395
(760) 245-3519

Dr. William Pazdral

15247 11th St
Victorville 92392
(760) 952-3443

Dr. Juvy Salazar

Summit Medical
12760 Hesperia Rd, #C
Victorville 92395
(760) 241-8088

Dr. Akhil Sharma

17259 Jasmine St, Ste A
Victorville 92395
(760) 843-9414

Dr. Kevin Smith

525 Melissa Ave., Ste A
Barstow 92311
(760) 255-2400

Dr. Donald Tsai

801 E. Mountain View, Ste B
Barstow 92311
(760) 256-8901

Dr. Rainilda Valencia

12677 Hesperia Rd, Ste 160
Victorville 92392
(760) 955-5656

Dr. Michael Vizcarra

11919 Hesperia Rd
Hesperia 92345
(760) 948-1454



MEDICAL SERVICES: SPECIALITY CARE



This list does not constitute a recommendation of any one physician. This is a resource list for information only.

Specialty Medical Physicians

Assistive Technology

Assistive Technology Assessment Center (ATAC)

24858 Prospect St.
Loma Linda 92354
Larry Silcox: (909) 796-7311 x47532

Assistive Technology Exchange Center (ATEC)

410 North Fairview
Santa Ana 92703
(714) 547-6301 x397
www.ocgoodwill.org

California Telephone Access Program (CTAP)

6370 Magnolia Ave, Ste 310
Riverside 92805
(951) 236-3059 **or** (800) 806-1191
www.ddtp.org

Rolling Start, Inc

570 West 4th Street, Ste #104
San Bernardino 92401
(909) 884-2129
www.rollingstart.com

Cardiologist

Dr. Rene Larsen

11234 Anderson
Loma Linda 92354
(909) 558-4207

Dr. Mohammad Kanakriyeh

399 E. Highland Ave
San Bernardino 92404
(909) 886-5200

Loma Linda University Children's Hospital

2195 Club Center Drive, Suite G
San Bernardino 92408
(909) 558-2617

ENT (Ears, Nose & Throat)

Dr. Kathleen Jones

18092 Wika Rd, Ste 120
Apple Valley 92307
(760) 946-1415

Loma Linda University Medical Center

13370 Anderson Street
Loma Linda 92350
(909) 558-2782

Gastroenterologist

Loma Linda University Medical Center

13370 Anderson Street
Loma Linda 92350
(909) 558-2782

Dr. Praful C. Shah

245 Terracina Boulevard
Redlands, CA 92373-4867
(909) 793-2896

Neurology

Edward Gallegos, MD

18523 Corwin Rd, Ste A
Apple Valley 92307
(760) 946-3876

High Desert Neuro-Diagnostic Medical Group Inc

18523 Corwin Rd, Ste A
Apple Valley 92307
(760) 946-3876

Loma Linda University Children's Hospital Specialty Team Center

2195 Club Center Dr., Ste A
San Bernardino 92408
(909) 835-1824

Dr. Raj Karnani

18419 Highway 18
Apple Valley 92307
(760) 946-0960

Dr. Purnima Thakran

18387 Highway 18, Ste 1&2
Apple Valley 92307
(760) 242-0111
or 705 E. Virginia Way, Ste C
Barstow 92311
(7600) 242-0111



**MEDICAL SERVICES:
SPECIALITY CARE (CONTINUED)**

This list does not constitute a recommendation of any one physician. This is a resource list for information only.

Specialty Medical Physicians
Continued

Ophthalmology/Optometry

Dr. James Dallas
1356 Main St
Barstow 92311
(760) 256-8014

Desert Family Eye Care
14349 Amargosa Road
Victorville 92392
(760) 241-2020

Dr. Phillip Hansen
15278 Main Street
Hesperia 92345
(760) 948-2020

Dr. Mark Huang
15278 Main Street, Ste B
Hesperia 92345
(760) 244-7304

Pacific Eye Institute
12550 Amargosa Rd, Unit B
Victorville 92392
(760) 241-6366

Dr. Lance Siegal
14075 Hesperia Rd
Victorville 92395
(760) 843-9333

Dr. Donald Yochem
21825 Hwy 18
Apple Valley 92307
(760) 247-5842

Dr. Richard York
12595 Hesperia Rd
Victorville 92395
(760) 245-5364

Vision Express
15923 Bear Valley Road, Ste B100
Victorville 92392
(760) 949-6363

Orthopedics

Loma Linda University Medical Center
11370 Anderson Street, Ste 1500
Loma Linda 92354
(909) 558-2808

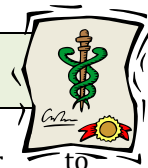
Dr. Mary Walker Center
Building 170 Inner Loop
Fort Irwin 92310
(760) 380-3124

Speech & Language

High Desert Speech Language Center, Inc
16785 Bear Valley Road Suite #2
Hesperia, California 92345
(760) 948-0702
(888) TALK-040
www.highdesertspeech.com



MEDICAL SERVICES: MEDI-CAL INSURANCE



What is Medi-Cal?

Medi-Cal is California's name for Medicaid, the federal and state program of medical assistance for needy and low income persons who are residents in the state of California.

Who can get Medi-Cal?

Even if you are working, own a house, or are married, you may be eligible for Medi-Cal. You must fall into one of the following Medi-Cal program categories:

1.) If you are aged 65 years or older, blind, or disabled and you are getting Supplemental Security Income/State Supplementary (SSI/SSP), you are automatically eligible for Medi-Cal and will be sent a California Benefits Identification Card (BIC). If you are getting Aid to Families with Dependent Children (AFDC), you may also be entitled to get Medi-Cal benefits.

2.) If you are Medically Indigent, if you are a pregnant woman with no linkage to a PA program; a refugee in the country 12 months or less; or a person age 21-65 in a skilled nursing facility or intermediate care facility.

What does it mean to be "Disabled" for Medi-Cal?

To get Medi-Cal as a disabled person, you must have severe physical and/or mental problems which will:
* last at least 12 months in a row and, stop you from working during those 12 months, or possibly result in death. You must be able to prove your disabling physical and/or mental problems with medical records, tests, and other medical findings.

What Property/Assets are Allowed for Medi-Cal?

There are property/assets limits for the Medi-Cal program. The county looks at how much you and your family have each month. The home you live in, furnishings, personal items, and one motor vehicle are not counted.

A single person is allowed to keep \$2000 in property/assets, more if you are married and/or have a family. If a child has property/assets or if a stepparent wants Medi-Cal for a stepchild, other rules may apply.

What to have when applying for Medi-Cal

When applying for Medi-Cal, you should be able to bring in the following:

- 1.) You must be a resident of California in order to get Medi-Cal.
- 2.) Social Security card(s).
- 3.) Medicare card(s).
- 4.) Naturalization document(s).
- 5.) Pregnancy verification.
- 6.) Income verification.

You may apply without the proof, but you will have to give it within a few days. If you cannot get the proof yourself, ask your eligibility worker to help you.

Medi-Cal Insurance Offices

15010 Palmdale Rd
Victorville 92392

Sacramento Office

(916) 636-1980
(800) 541-5555
www.medi-cal.ca.gov

Physician Referral Hotline

(909)887-1350

Specialist Referral Hotline

(800) 464-1123

Healthy Families

Healthy Families is low cost insurance for children and teens. It provides health, dental and vision coverage to children who do not have insurance and do not qualify for free Medi-Cal.

P.O. Box 138005
Sacramento 95813
(800) 880-5305
www.healthyfamilies.ca.gov

Inland Empire Health Plan (IEHP)

303 E. Vanderbilt Way
San Bernardino 92408
(800) 440-IEHP (4347)
www.iehp.org

Molina Healthcare

200 Oceangate, Ste 100
Long Beach 90802
(888) MOLINA1 (665-4621)
www.molinahealthcare.com

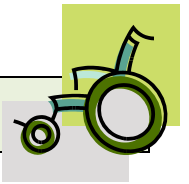
SAN BERNARDINO COUNTY MEDI-CAL OPTIONS

FULL SCOPE MEDI-CAL	IEHP Inland Empire Health Plan	MOLINA HEALTHCARE
<p>Health insurance coverage for qualifying persons who live in California, who have income and resources below established limits.</p> <p>Most children with Medi-Cal must be in a Health Plan. But if the child qualifies for Medi-Cal because of a disability or special health care need, they can choose the kind of Medi-Cal they want for the child.</p>	<p>IEHP is a public, non-public, non-profit agency that is an HMO serving Medi-Cal, Medicare DualChoice, Healthy Families, and Healthy Kids beneficiaries residing in Riverside and San Bernardino.</p>	<p>Molina is a health plan through a Medicaid Program that provides health insurance to low income families and individuals with disability, with eligibility requirements and benefits for Medicaid determined by each state.</p>
<p style="text-align: center;">Eligibility for Medi-Cal</p> <ol style="list-style-type: none"> Persons 65 or older, under 21 years old, certain adults between 21 and 65 if they have minor children living with them, blind or disabled, pregnant women, receiving nursing home care, certain refugees, Asilees, Cubanor Haitian Entrants. 	<p style="text-align: center;">Eligible for IEHP</p> <ol style="list-style-type: none"> Covers children under age 19. Covers undocumented Children. 	<p style="text-align: center;">Eligible for Molina</p> <ol style="list-style-type: none"> Children up to 19 years old, pregnant women and families with children under age 19 who participate in the Ohio Works First program.
<p style="text-align: center;">Medi-Cal Coverage</p> <ol style="list-style-type: none"> Doctor visits Hospital stays and surgery Hospital outpatient procedures and services (MRI and X-rays) Emergency and urgent care, including emergency ambulance services Prescription drugs Procedures, like biopsies or having a colonoscopy Screening tests, like mammograms of cholesterol blood tests. Preventive care, like vaccines, check-ups, and family planning. Physical, occupational, and Speech therapy. Pregnancy test and pre-natal care Durable medical equipment (DME), like a walker or wheelchair Long-term care Transportation, in limited cases Dental care for people under age 21 Some mental health care 	<p style="text-align: center;">IEHP Coverage</p> <ol style="list-style-type: none"> Primary Care & Specialist Doctors Visits Urgent Care Services Pharmacy Infant & Baby Care Immunizations Services for people with disabilities. Emergency Services Hospital Services(inpatient & Outpatient) Eye Exams & Glasses Family Planning Services Child Care Seat Program Weight Management Program Family Asthma Management Program Healthy Babies Program Bicycle Helmet Program Stop Smoking Program Diabetes Management Program Healthy Heart Program 	<p style="text-align: center;">Molina Standard Benefits</p> <ol style="list-style-type: none"> Doctor Visit Specialist Services Pharmacy Hospital Care (inpatient and outpatient) Emergency Services 24 hour Nurse Help line Prenatal Care Newborn and well-baby care Family Planning Services Vision Services (eye exams and glasses) Health Education Services Immunization (CHDP)



MEDICAL SUPPLIES AND EQUIPMENT

This list does not constitute a recommendation of any one agency. This is a resource list for information only.



Active Mobility Center

14909 7th St
Victorville 92392
(800) 366-6015
www.myactivemobility.com

Allied Medical Supplies

15366 11th St
Victorville 92392
(760) 245-2818

Apria Healthcare

14464 Atstar
Victorville 92392
(760) 241-4488

Golden Valley Medical

424 W. Highland Ave
San Bernardino 92407
(909) 885-0317
www.goldenvalleymedical.com

Johnson's Orthopedic Appliances, Inc

7254 Magnolia Ave
Riverside 92504
(951) 785-4411

Medic Alert Foundation International

2323 Colorado Ave
Turlock 95382
(800) 825-3785
www.medicalert.org

Mountain View Services, Inc

625 Amigos Dr
Redlands 92373
(909) 335-8122

Omega Pharmacy

246 N. College St, Ste 100
Covina 91723
(626) 967-2641

Shield Healthcare

935 S. Mt. Vernon, Ste 110
Colton 92324
(800) 557-8797
www.shieldhealthcare.com

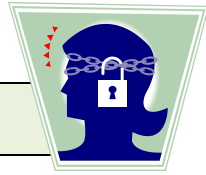
United Medical Supplies, Inc

Raquel A. Beth
8811 Shirley Ave
Northridge 91324
(818) 718-2811



MENTAL HEALTH, PSYCHIATRY, PSYCHOLOGY AND COUNSELING SERVICES

This list does not constitute a recommendation of any one physician. This is a resource list for information only.



Advanced Counseling

Dr. Multani & Dr. Ohaeri
16279 Walnut Street
Hesperia 92345
(760) 947-0070

Barstow Counseling Center

805 E. Mt. View
Barstow 92311
(760) 256-5026

Behavioral Health Consultants

16519 Victor St., Ste 406
Victorville 92395
(760) 843-0506

Catholic Charities/Caritas Counseling

16300 Highway 18, Ste 700
Apple Valley 92307
(760) 242-2311, x8454

Children's Crisis Response Team

County of San Bernardino
850 E. Foothill Blvd.
Rialto 92376
(909) 421-9233
M-F 8AM -10PM
☞ Provide evaluation, crisis intervention,
education and follow-up for children and
adolescents at risk of acute psychiatric
hospitalization.

Desert/Mountain Clinical Counseling Center

17800 Highway 18
Apple Valley 92307
(760) 242-6336

Desert Mountain F.I.C.S. (Family Intervention and Community Support)

14360 St. Andrews Dr., Ste 11
Victorville 92392
(760) 245-4695

Hesperia Behavioral Health

14628 Main St.
Hesperia 92345
(760) 244-0576

High Desert Child, Adolescent & Family Center

16248 Victor St.
Victorville 92395
(760) 243-7151

Integrated Mind Institute

Warris Richard Wahyat, MD
16017 Tuscola Rd, Ste A
Apple Valley 92307
(909) 370-112

Loma Linda Univ Behavioral Med Ctr

Dept. of Psychiatry Inpatient Svcs
1710 Barton Rd, Ste A & B
Redlands 92373
(909) 793-9333

Lucerne Valley Behavioral Health

32500 Old Woman Springs Rd, Ste C
Lucerne Valley 92356
(760) 248-6512

Needles Counseling Center

1406 Bailey Ave, Ste E
Needles 92363
(760) 326-4221

Oasis Counseling Centers

15447 Anacapa Rd, Ste 104
Victorville 92392
(760) 245-9446
or 500 Melissa Ave.
Barstow 92311
(760) 256-0376

Telecare High Desert Crisis Walk In Center

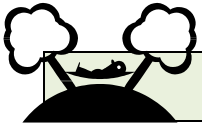
16460 Victor Street
Victorville 92395
(760) 245-8837

Value Options

(800) 236-0756
Mental Health Referral Line

Victor Valley Behavioral Center

12625 Hesperia Rd
Victorville 92392
(760) 955-1777
Walk In: M-F 9a-2p



RESPITE SERVICES

This list does not constitute a recommendation of any one vendor. This is a resource list for information only.



Respite care means temporary and intermittent care provided for short periods of time. Before Regional Center will consider providing respite, all natural supports must be exhausted. Respite services **must** be provided in the consumer's home.

There are two types of respite, *agency respite* and *preferred provider respite*.

- *Agency respite* is provided by a trained employee of a respite agency. The agency will provide you with an employee in your area that can provide the respite services. This option is usually obtained if you do not know someone that would be willing to be hired through one of the agencies listed below or your child requires a high level of medical care.
- *Preferred Provider respite* is provided by some one that you already know. Respite vendors have agreed to work with IRC to hire persons whom your family is most comfortable with providing your child's care. IRC would then pay the vendor who would then pay the person that you have selected to provide the respite care. The respite provider cannot reside in the home, must be at least 18 years of age, CPR/First Aide Training, TB test, background check. Below is a list of agencies that have agreed to work with your chosen respite person.

*****Please note that this list can change at any time. Please contact your Consumer Services Coordinator for most current options.**

Preferred Provider List

Accredited Family Care Services

5955 De Soto Ave, Ste #160
Woodland Hills, CA 91367
(800) 974-1234
Fax: (866) 558-7732

ACN Health Care Providers, Inc

35325 Date Palm Dr., Ste 152B
Cathedral City 92234
(760) 202-1888
Fax: (760) 202-8818

Cambrian Nursing Care Services

15041 Anacapa Rd, Ste 2
Victorville 92392
(760) 955-2250
Fax: (562) 498-1829

In Roads, Inc

17130 Sequoia St, Ste 206
Hesperia, Ca 92345
(760) 947-4423
Fax: (760) 947-4483

Inland Respite Agency

10800 Hole Ave, Ste 10
Riverside, CA 92505
(951) 353-1261

Maulin Home Care Services

846 W. Foothill Blvd.
Upland, CA 91786
(909) 946-9600
Fax: (909) 946-9669

Maxim Health Care Services

4240 Latham St, Ste D
Riverside 92501
(951) 684-4148
Fax: (951) 369-8159

Shella Care Management Services

29800 Bradley Rd. Suite 102
P.O. Box 263
Sun City, CA 92586
(951) 723-8460
Fax: (951) 639-5950

United Cerebral Palsy

35-325 Date Palm, #135/136
Cathedral City, CA 92234
(760) 321-8184, x10
Fax: (760) 321-8284

We Care For You, LLC

23493 Crestforest Dr.
Mail: P.O. Box 5328
Crestline, CA 92325
(909) 338-0448
Fax: (909) 338-7722



SUPPORT SERVICES



Carolyn E. Wylie Center

4495 Magnolia Avenue
Riverside, CA 92501-4135
(951) 369-8105
www.wyliecenter.org

Department of Developmental Services

1600 9th Street
P.O. Box 944202
Sacramento 95814
(916) 654-1690 **or** (866) 802-0514
www.scdd.ca.gov

➤ **Local Area Board #12**

1960 Chicago Ave, Ste E8
Riverside 92507
(800) 962-8073 **or** (951) 782-3226

Department of Rehabilitation

12421 Hesperia Rd, Ste 10
Victorville 92395
(760) 243-0830
www.rehab.cahwnet.gov/default.html

Inland Regional Center Resource Library

1425 S. Waterman Ave
San Bernardino 92408
(909) 890-4794

Victor Valley Family Resources

(760) 948-2600

Foundations

American Academy of Pediatrics

(847) 434-4000
www.aap.org

American Association on Mental Retardation

444 North Capitol St, NW, Ste #846
Washington, DC 20001
(800) 424-3688
www.aamr.org

Attention Deficit Disorder Association (ADDA)

P.O. Box 543
Pottstown, PA 19464
(484) 945-2101
www.add.org

Epilepsy Foundation of America

3600 Wilshire Blvd
Los Angeles 90010
(800) 564-0445
www.epilepsy-socalif.org

Federation for Children with Special Needs

(800) 331-0688
www.fesn.org

Inland Empire Autism Society

P.O. Box 2886
Corona 92878
(951) 549-1771
www.autismsociety.ca.org
www.inlandempireautism.org

National Down Syndrome Society

666 Broadway, 8th Floor
New York, NY 10012
(800) 221-4602
www.ndss.org

National Organization for Rare Disorders, Inc

P.O. Box 8923
New Fairfield 06812-8923
(800) 999-6673
www.rarediseases.org

United Cerebral of the Inland Empire

71321 Highway 111, Ste 4
Rancho Mirage, CA 92270
www.ucp.org
www.ucpie.org

Moving out the State Resources

Resources for the state your moving to

Call ARC

(800) 433- 5255

Yellow Pages For Kids with Disabilities

www.yellowpagesforkids.com



SUPPORT SERVICES: INLAND REGIONAL CENTER



1365 S. Waterman Ave
P.O. Box 6127
San Bernardino 92408
(909) 890-3000
www.inlandrc.org

What is Inland Regional Center (IRC)?

Inland Regional Center is one of 21 Regional Centers throughout the State of California that is mandated through the Lanterman Act to serve individuals with developmental disabilities. Each Regional Center is a private, non-profit corporation that is contracted and governed through the Department of Developmental Services. Inland Regional Center serves individuals and their families in San Bernardino & Riverside Counties.

Who Is Eligible for Regional Center Services?

A person is eligible for Regional Center services if they have a "Developmental Disability", which is a disability that originates before the age of 18 and will be likely to continue indefinitely. The disability must constitute a "substantial disability for that individual." *Developmental Disability includes Mental Retardation, Cerebral Palsy, Epilepsy, Autism, and disabling conditions similar to mental retardation that require similar treatment.* Not included are disabling conditions that are solely physical or psychiatric in nature, or solely a learning disability.

What does Regional Center Provide?

IRC's approach to service delivery is based on a consumer/family-driven approach that includes collaborating and accessing community services to assist and enhance the quality of life for all individuals. Depending on the age of the individual & geographic area of residence, there is a service delivery team to focus on each segment of life and each level of need:

Early Start: Infants & toddlers, 0-3 years old, will be assisted by an Infant Services Coordinator who will work with the family in increasing their child's developmental levels and identify needed supports.

School Age: Children, aged 3-16. The Consumer Services Coordinator assists with the family maintenance through supports as well as educational planning. The primary focus becomes maintaining family unity and maximizing every educational opportunity.

Transition: Teens & young adults, aged 16-22. Transition teams begin the essential future planning process of transitioning from school to work and from childhood to adulthood.

Adult: Adults, aged 23-49. Coordination of services continues for adults on work, recreation and living options issues. The role of the Regional Center is one of fostering independence and inclusion in their communities.

Senior: Adults ages 50+years. IRC senior citizens are faced with a variety of issues: retirement; increases need for medical care; recreation opportunities; and residential services. Inland Regional Center advocates for these individuals to achieve full community participation as a senior and provides for monitoring of health needs.

San Bernardino School Age Upper Desert Unit: Service Areas include, but not limited to...Adelanto, Apple Valley, Baker, Barstow, Daggett, El Mirage, Ft. Irwin, Helendale, Hesperia, Hinkley, Lucerne Valley, Needles, Newberry Springs, Phelan, Pinon Hills, Victorville, Wrightwood & Yermo.

Program Manager
Sheilah Coble
(909) 890-3477
scoble@inlandrc.org

Service Coordinators
Crystal McCampbell
(909) 890-3244
cmccampbell@inlandrc.org
Cynthia Jefferson
(909) 890-3075
cjefferson@inlandrc.org
Gabriele Carr
(909) 890-3184
gcarr@inlandrc.org

Gloria Ruano
(909) 890-3289
gruano@inlandrc.org
Janice Salfen
(909) 890-3179
jsalfen@inlandrc.org
Jennifer Wright
(909) 382-4643
jwright@inlandrc.org
Kanika Gibbs
(909) 890-3139
kgibbs@inlandrc.org

Kimberly Bruno
(909) 890-3163
kbruno@inlandrc.org
Leticia Ake
(909) 890-3135
lake@inlandrc.org
Lynette Banda
(909) 890-3192
lbanda@inlandrc.org
Yolanda Haro
(909) 890-3126
yharo@inlandrc.org



Adelanto City Transit
(760) 246-2300 ext.3009

Auto Club of Southern California (AAA)
Victorville
Apple Valley

**California Department of
Transportation (CalTrans)**
464 W. 4th St
San Bernardino 92401
(909) 383-4561
(909) 383-6899

Dial-A-Ride: Barstow
190 Cal Ave
Barstow 92311
(760) 256-0311

**Dial A Ride: Baldy Mesa, Phelan, Lucerne
Valley, Helendale & Pinon Hills**
(877) 545-8000

**Dial A Ride: Victorville, Hesperia Apple Valley
& Adelanto**
(760) 244-4000

**Med-Cab Non-Emergency Medical
Transportation**
(760) 951-3594

Superior Shuttle Company
(760) 244-1510

Victor Valley Transit Authority
11741 E. Santa Fe Ave
Hesperia 92345
(760) 948-3030
www.vvta.org

**APPENDIX I:
GLOSSARY OF COMMONLY USED TERMS**

ABA: Applied Behavioral Analysis - a behavioral intervention focusing on objectively defined, observable behaviors of social significance and seeks to improve the behavior by utilizing scientific methods. Teaching strategies are systematic and involve objective measurement procedures.

APE: Adapted Physical Education - an educational service provided by an adapted physical specialist who assists children with motor activities such as balance, climbing, and other gross motor skills.

AT: Assistive Technology - a piece of equipment, or product system, whether acquired commercially off the shelf, modified, customized, that is used to increase, maintain, or improve functional capabilities of individuals with disabilities.

Behavior Modification - a IRC service devoted to the improvement to human behavior, and education of parents with a child with developmental disabilities by a behavior modification specialist.

CAC: Community Advisory Committee – mandated committee comprised of parents of children with disabilities, school district representatives, and representatives of other public and private agencies concerned with the needs of children with disabilities who meet to review the special education local plan and programs

CCS: California Children Services - California medical program for physically handicapped children who may need specialized medical services and/or equipment in order to bring the children to their maximum development

CSC: Consumer Services Coordinator - an IRC case manager that coordinates services for the family and the child. The CSC manages, prepares reports, and assists with services, such as the IEP and IPP.

DTT: Discrete Trial Training - an intense behavioral intervention (commonly associated with Autism) that consists of a series of distinct repeated lessons or trials taught one-to-one. Each trial consists of an

antecedent, a directive, a behavior, and a consequence.

FAA: Functional Analysis Assessment - an educational services that assesses the cause (or “function”) of behavior before developing and intervention. Then the intervention must be based on the hypothesized cause of the behavior.

IDEA: Individuals with Disabilities Act (PL101.476) - a law passed by congress that states all children with disabilities have the right to a free, appropriate, public education, which is usually referred to as special education.

IEP: Individualized Education Program - a written document that states a child’s current level of educational performance, specifies annual goals and short-term objectives, and identifies appropriate services needed to meet the goals.

IHSS: In Home Supportive Services - is a governmental program which assists low-income, and disabled adults and children with extraordinary needs for care to remain in their own homes by providing personal care services and/or domestic services.

Inclusion - the participation of children with disabilities into a regular education program with related services

IPP: Individualized Program Plan - a written document prepared by the Regional Center and parents to discuss current level of functioning, long-term objectives, and identifies appropriate services needed to meet the goals in the home.

Lanterman Act – California law that establishes the right of persons with developmental disabilities to services and supports they need and choose. The intent is to support consumers to live independent and productive lives in the community.

GLOSSARY OF COMMONLY USED TERMS (CONTINUED)

LSH: Language Speech and Hearing Therapy - an educational services provided by a remedial language and speech therapist or speech pathologist who helps children to communicate.

Mainstreaming - placement of students with disabilities in typical classrooms under the direction of regular education teachers with support from special education teachers and/or designated instruction and services.

OT: Occupational Therapy - an educational service provided by a licensed occupational therapist who assists children with fine motor activities and everyday tasks like eating, dressing, and hand use.

PT: Physical Therapy - an educational service provided by a licensed physical therapist who assists children with gross motor activities such as rolling, sitting, and walking.

Respite - an IRC service designed to assist families in staying together. This service is designed to give family members a break or relief from the ongoing demands and responsibilities of caring for a child with developmental disabilities.

SDC: Special Day Class - a district classroom that is

appropriate for children who would benefit from specialized services for over half the school day; the children receive most of their instruction from a special education teacher.

SELPA: Special Education Local Plan Area - an educational agency that purpose is to ensure that quality special education programs and services are available throughout the regional to meet the individual needs of special education students.

SSI: Social Security/Supplemental Security Income - a governmental program that pays monthly benefits to children with disabilities whose parent's have low incomes and limited assets.

TASK: Team of Advocates for Special Kids - a non-profit corporation to which parents of children with disabilities can turn for assistance and support in seeking and obtaining needed early intervention, educational, medical, or therapeutic support services for their children.

Workability - provides programs that serve students with disabilities at different educational levels by providing training and assistance toward meaningful employment.

APPENDIX II REGIONAL CENTER QUALIFYING CONDITIONS

AUTISM www.nichy.org

What is Autism?

Autism is a neurological disorder that affects a child's ability to communicate, understand language, play, and relate to others. PDD represents a distinct category of developmental disabilities that share many of the same characteristics, including: Autistic Disorder, Asperger's Disorder, Rett's Disorder, Childhood Disintegrative Disorder, and Pervasive Developmental Disorder Not Otherwise Specified (PDD-NOS). While there are subtle differences and degrees of severity among these conditions, treatment and educational needs can be very similar for all of them.

What are the Signs of Autism?

Some or all of the following characteristics may be observed in mild to severe forms:

- ☞ Communication problems (e.g., using and understanding language);
 - ☞ Difficulty relating to people, objects, and events;
 - ☞ Unusual play with toys and other objects;
 - ☞ Difficulty with changes in routine or familiar surroundings; and
 - ☞ Repetitive body movements or behavior patterns.
- Children with Autism vary widely in abilities, intelligence, and behaviors. Some children do not speak; others have language that often includes repeated phrases or conversations. Children with more advanced language skills tend to use a small range of topics and have difficulty with abstract concepts. Repetitive play skills, a limited range of interests, and impaired social skills are generally evident as well. Unusual responses to sensory information—for example, loud noises, lights, certain textures of food or fabrics—are also common.

What About School?

Early diagnosis and intervention are very important for children with Autism. Under the IDEA, children with Autism may be eligible for early intervention services (birth - 3) and an educational program appropriate to their individual needs. In addition to academic instruction, special education programs for students with autism (ages 3 - 22) focus on improving communication, social, academic, behavioral, and daily living skills. Behavior and communication problems that interfere with learning often require the assistance of a professional who is particularly knowledgeable in the autism field to develop and help implement a plan which can be carried out at home and school.

The classroom environment should be structured so that the program is consistent and predictable. Students with Autism learn better and are less confused when information is presented visually as well as verbally. Interaction with nondisabled peers is also important, for these students provide models of appropriate language, social, and behavioral skills. Consistency and continuity are very important for children with Autism, and parents should always be involved in the development of their child's program, so that learning activities, experiences, and approaches will be most effective and can be carried over into the home and community. With educational programs designed to meet a student's individual needs and specialized adult support services in employment and living arrangements, many children and adults with Autism grow to live, work, and participate fully in their communities.

Tips for Parents

- ☞ Learn about Autism. The more you know, the more you can help yourself and your child.
- ☞ Be mindful to interact with and teach your child in ways that are most likely to get a positive response.
- ☞ Learn what is likely to trigger melt-downs for your child, so you can try to minimize them. Remember, the earliest years are the toughest, but it does get better!
- ☞ If you weren't born loving highly structured, consistent schedules and routines, ask for help from other parents and professionals on how to make it second nature for you. Behavior, communication, and social skills can all be areas of concern for a child with autism and experience tells us that maintaining a solid, loving, and structured approach in caring for your child, can help greatly.
- ☞ Learn about assistive technology that can help your child. This may include a simple picture communication board to help your child express needs and desires, or may be as sophisticated as an augmentative communication device.
- ☞ Work with professionals in early intervention or in your school to develop an IEP that reflects your child's needs and abilities. Be sure to include related services, supplementary aids and services, AT, and a positive behavioral support plan, if needed.
- ☞ Be patient, and stay optimistic. Your child, like every child, has a whole lifetime to learn and grow.

AUTISM PROGRAMS

This list does not constitute a recommendation of any one program. This is a resource list for information only.

Applied Behavior Consultants, Inc

9531 Pittsburgh Avenue
Rancho Cucamonga 91701
(909) 484-2848
www.appliedbehaviorconsultants.com

Autism Behavior Consultants, Inc

2909 Oregon Ct, Ste A1
Torrance, CA 90503
(310) 320-1333
www.AutismPrograms.com

Autism Partnership

200 Marina Drive, Ste C
Seal Beach, CA 90740
(562) 431-9293

Autism Spectrum Therapies

147 E. Olive Avenue
Monrovia 91016
(626) 446-1101 or (866) 7AST-AR4
www.autismtherapies.com

B.E.S.T. Services

411 S. Magnolia Ave
El Cajon 92020
(619) 442-1271
www.bestautismservices.com

Leaf Wing Center

(also known as C.I. B.A.)
16000 Apple Valley Rd, Ste C5
Apple Valley 92307
(760) 242-3353
www.cibainc.org

California PsychCare

4001 11th Street
Riverside 92501
(818) 401-0661
www.calpsychcare.com

Center for Autism Research, Evaluation & Services (CARES)

2967 Michelson, Ste G180
Irvine 92612
(909) 559-5661

Center for Autism and Related Disorders (CARD)

23300 Ventura Blvd.
Woodlands, CA 91364
(818) 223-0123
www.CenterForAutism.com

Claremont Autism Center :McKenna College

850 Columbia Ave
Claremont, CA 91711-6420
(909) 621-8598
<http://psych.claremontmckenna.edu/facilities.asp>

Comprehensive Autism Services & Education (CASE)

Cynthia La Brie Norall, PhD
785 Grand Ave, Ste 101
Carlsbad, CA 920008
(760) 720-4964
www.casefamily.com

Coyne & Associates, Inc.

741 Garden View Court, Suite 104
Encinitas, CA 92024
(760) 213-1776
www.coyneandassociates.com

Family Interact Program

Dr. Jose Fuentes
24230 Barton Rd
Loma Linda, CA 92354
(909) 796-9300

Floortime Method

Dr. Stanley Greenspan
4938 Hapden Lane, Ste 229
Bethesda, MD 20814
(301) 657-2348
www.stanleygreenspan.com

Lovaas Institute for Early Intervention

11500 W. Olympic Blvd, Ste 318
Los Angeles 90064
(310) 914-5433
www.lovaas.com

Relationship Development Institute

Steven Gutstein, PhD
4130 Bellaire Blvd, Ste 214
Houston, TX 77025
(713) 838-1362
www.rdi.org

University Center for Developmental Disabilities

(UCDD): California State University, San Bernardino
5500 University Parkway
San Bernardino 92407
(909) 537-5495

REGIONAL CENTER QUALIFYING CONDITION:

CEREBRAL PALSY

www.nichy.org

What is Cerebral Palsy?

Cerebral palsy--also known as *CP*--is a condition caused by injury to the parts of the brain that control our ability to use our muscles and bodies. *Cerebral* means having to do with the brain. *Palsy* means weakness or problems with using the muscles. CP can be mild, moderate, or severe. However, CP doesn't get worse over time, and most children with CP have a normal life span.

What Are the Types of CP

There are three main types of CP:

Spastic CP is where there is too much muscle tone or tightness. Movements are stiff, especially in the legs, arms, and/or back. Children with this form of CP move their legs awkwardly, turning in or scissoring their legs as they try to walk. This is the most common form of CP.

Athetoid CP (also called *dyskinetic CP*) can affect movements of the entire body. Typically, this form of CP involves slow, uncontrolled body movements and low muscle tone that makes it hard for the person to sit straight and walk.

Mixed CP is a combination of the symptoms listed above. A child with mixed CP has both high and low tone muscle. Some muscles are too tight, and others are too loose, creating a mix of stiffness and involuntary movements.

Other terms used to describe the different areas of the body that can be affected by CP include:

Diplegia--This means only the legs are affected.

Hemiplegia--This means one half of the body (such as the right arm and leg) is affected.

Quadriplegia--This means both arms and legs are affected, sometimes including the facial muscles and torso.

What About Treatment

With early and ongoing treatment the effects of CP can be reduced. Many children learn how to get their bodies to work for them in other ways. *Special education and related services* are available through the public school to help each child achieve and learn. Typically, children with CP may need different kinds of therapy, including: *Physical therapy* (PT), which helps the child develop stronger muscles such as those in the legs and trunk. Through PT, the child works on skills such as walking, sitting, and keeping his or her balance.

Occupational therapy (OT), which helps the child develop fine motor skills such as dressing, feeding, writing, and other daily living tasks.

Speech-language pathology (S/L), which helps the child develop his or her communication skills. The child may

work in particular on speaking, which may be difficult due to problems with muscle tone of the tongue and throat.

The child may also find a variety of special equipment helpful. A variety of therapy equipment and adapted toys are available to help children play and have fun while they are working their bodies. Activities such as swimming or horseback riding can help strengthen weaker muscles and relax the tighter ones.

New medical treatments are being developed all the time. Sometimes surgery, Botox injections, or other medications can help lessen the effects of CP, but there is no cure for the condition.

What About School

A child with CP can face many challenges in school and is likely to need individualized help. Fortunately, states are responsible for meeting the educational needs of children with disabilities.

For school-aged children, special education and related services will be provided through the school system.

School staff will work with the child's parents to develop an IEP. Special education and related services, which can include PT, OT, and speech-language pathology, are provided at no cost to parents.

The ability of the brain to find new ways of working after an injury is remarkable. Even so, it can be difficult for parents to imagine what their child's future will be like. Good therapy and handling can help, but the most important "treatment" the child can receive is love and encouragement, with lots of typical childhood experiences, family, and friends. With the right mix of support, equipment, extra time, and accommodations, all children with CP can be successful learners and full participants in life.

Tips for Parents

- ☞ Learn about CP. The more you know, the more you can help yourself and your child.
- ☞ Keep informed about new treatments and technologies that may help. New approaches are constantly being worked on and can make a huge difference to the quality of your child's life. However, be careful about unproven new "fads."
- ☞ Be patient, keep up your hope for improvement. Your child, like every child, has a whole lifetime to learn and grow.
- ☞ Work with professionals in early intervention or in your school to develop an IEP that reflects your child's needs and abilities. Be sure to include related services such as LSH, PT, and OT if your child needs these.

**REGIONAL CENTER QUALIFYING CONDITION:
EPILEPSY**

www.nichy.org

According to the Epilepsy Foundation of America, epilepsy is a physical condition that occurs when there is a sudden, brief change in how the brain works. When brain cells are not working properly, a person's consciousness, movement, or actions may be altered for a short time. These physical changes are called epileptic seizures. Epilepsy is therefore sometimes called a seizure disorder. Epilepsy affects people in all nations and of all races. Some people can experience a seizure and not have epilepsy. A single seizure does not mean that the person has epilepsy.

Characteristics

Although the symptoms listed below are not necessarily indicators of epilepsy, it is wise to consult a doctor if you or a member of your family experiences one or more of them:

"Blackouts" or periods of confused memory;
Episodes of staring or unexplained periods of unresponsiveness; Involuntary movement of arms and legs; "Fainting spells" with incontinence or followed by excessive fatigue; or Odd sounds, distorted perceptions, episodic feelings of fear that cannot be explained.

Seizures can be generalized, meaning that all brain cells are involved. One type of generalized seizure consists of a convulsion with a complete loss of consciousness. Another type looks like a brief period of fixed staring. Seizures are partial when those brain cells not working properly are limited to one part of the brain. Such partial seizures may cause periods of "automatic behavior" and altered consciousness. This is typified by purposeful- looking behavior, such as buttoning or unbuttoning a shirt. Such behavior, however, is unconscious, may be repetitive, and is usually not recalled.

Educational Implications

Students with epilepsy or seizure disorders are eligible for special education and related services under the Individuals with Disabilities Education Act (IDEA). Epilepsy is classified as "other health impaired" and an Individualized Education Program (IEP) would be developed to specify appropriate services. Some students may have additional conditions such as learning disabilities along with the

seizure disorders.

Seizures may interfere with the child's ability to learn. If the student has the type of seizure characterized by a brief period of fixed staring, he or she may be missing parts of what the teacher is saying. It is important that the teacher observe and document these episodes and report them promptly to parents and to school nurses.

Depending on the type of seizure or how often they occur, some children may need additional assistance to help them keep up with classmates. Assistance can include adaptations in classroom instruction, first aid instruction on seizure management to the student's teachers, and counseling, all of which should be written in the IEP.

It is important that the teachers and school staff are informed about the child's condition, possible effects of medication, and what to do in case a seizure occurs at school. Most parents find that a friendly conversation with the teacher(s) at the beginning of the school year is the best way to handle the situation. Even if a child has seizures that are largely controlled by medication, it is still best to notify the school staff about the condition. School personnel and the family should work together to monitor the effectiveness of medication as well as any side effects. If a child's physical or intellectual skills seem to change, it is important to tell the doctor. There may also be associated hearing or perception problems caused by the brain changes. Written observations of both the family and school staff will be helpful in discussions with the child's doctor.

Students can benefit the most when both the family and school are working together. There are many materials available for families and teachers so that they can understand how to work most effectively as a team.

The Epilepsy Center

(951) 340-9193

www.theepilepsycenter.org

**REGIONAL CENTER QUALIFYING CONDITION:
INTELLECTUAL DISABILITY (Formerly Mental Retardation)**

www.nichy.org

Intellectual disability (formerly mental retardation) is a term used when a person has certain limitations in mental functioning and in skills such as communicating, taking care of him or herself, and social skills. These limitations will cause a child to learn and develop more slowly than a typical child. Children with intellectual disability may take longer to learn to speak, walk, and take care of their personal needs such as dressing or eating. They are likely to have trouble learning in school. They will learn, but it will take them longer. There may be some things they cannot learn.

What Causes Intellectual Disability?

Doctors have found many causes of intellectual disability. The most common are:

Genetic conditions. Sometimes intellectual disability is caused by abnormal genes inherited from parents, errors when genes combine, or other reasons. Examples of genetic conditions are Down syndrome, fragile X syndrome, and phenylketonuria (PKU).

Problems during pregnancy. Intellectual disability can result when the baby does not develop inside the mother properly. For example, there may be a problem with the way the baby's cells divide as it grows. A woman who drinks alcohol or gets an infection like rubella during pregnancy may also have a baby with intellectual disability.

Problems at birth. If a baby has problems during labor and birth, such as not getting enough oxygen, he or she may have intellectual disability.

Health problems. Diseases like whooping cough, the measles, or meningitis can cause an intellectual disability. Intellectual disabilities can also be caused by extreme malnutrition (not eating right), not getting enough medical care, or by being exposed to poisons like lead or mercury.

How is Intellectual Disability Diagnosed?

Intellectual disability is diagnosed by looking at two main things. These are: the ability of a person's brain to learn, think, solve problems, and make sense of the world (called IQ or intellectual functioning); and whether the person has the skills he or she needs to live independently (called adaptive behavior, or adaptive functioning).

Intellectual functioning, or IQ, is usually measured by a test called an IQ test. The average score is 100. People scoring below 70 to 75 are thought to have an intellectual disability. To measure adaptive behavior, professionals look at what a child can do in comparison to other children of his or her age. Certain skills are important to adaptive behavior. These are: daily living skills, such as getting dressed, going to the bathroom, and feeding one's self; communication skills, such as understanding what is said and being able to answer; social skills with peers, family

members, adults, and others. To diagnose an intellectual disability, professionals look at the person's IQ and his or her adaptive skills.

What Are the Signs of Intellectual Disability?

There are many signs of intellectual disability. For example, children with intellectual disability may: sit up, crawl, or walk later than other children; learn to talk later, or have trouble speaking, find it hard to remember things, not understand how to pay for things, have trouble understanding social rules, have trouble seeing the consequences of their actions, have trouble solving problems, and/or have trouble thinking logically.

What About School?

A child with an intellectual disability can do well in school but is likely to need individualized help. Fortunately, states are responsible for meeting the educational needs of children with disabilities.

Many children with an intellectual disability need help with adaptive skills, which are skills needed to live, work, and play in the community. Teachers and parents can help a child work on these skills at both school and home. Some of these skills include: communicating with others; taking care of personal needs (dressing, bathing, going to the bathroom); health and safety; home living (helping to set the table, cleaning the house, or cooking dinner); social skills (manners, knowing the rules of conversation, getting along in a group, playing a game); reading, writing, and basic math; and as they get older, skills that will help them in the workplace.

Tips for Parents

- ☞ Learn about intellectual disability. The more you know, the more you can help yourself and your child.
- ☞ Encourage independence in your child. Give your child chores. Keep her age, attention span, and abilities in mind. Break down jobs into smaller steps. Give your child frequent feedback. Praise your child when he or she does well. Build your child's abilities.
- ☞ Find out what skills your child is learning at school. Find ways for your child to apply those skills at home.
- ☞ Find opportunities in your community for social activities, such as scouts, recreation center activities, sports, and so on. These will help your child build social skills as well as to have fun.
- ☞ Talk to other parents whose children have intellectual disability. Parents can share practical advice and emotional support.
- ☞ Meet with the school and develop an educational plan to address your child's needs. Keep in touch with your child's teachers. Offer support. Find out how you can support your child's school learning at home.



INLAND REGIONAL CENTER

SIGN UP FOR OUR E-MAIL LIST-SERV, THE PARENT-TO-PARENT NETWORK

If you are interested in knowing about upcoming events in the Southern California area, make sure you fill out the form below to enter your name into our electronic ListServ/Parent-to-Parent Network. If you have knowledge of an upcoming event of which you would like to inform others, please email dkimble@inlandrc.org with your information.

For security purposes, a subscription confirmation e-mail will be sent to you for your response. Instructions will be supplied with the confirmation e-mail. Don't forget to respond so you can start receiving 'real time' information on the events and resources available to you in the Inland Empire/Southern California area.

Email Address*	
First Name*	
Last Name*	
Company	
Address*	
Address (line 2)	
City*	
State*	
Zip Code*	
County*	
Phone Number	
CSC Name	

Do you have a connection to an individual/s with a developmental disability served by Inland Regional Center?*	<input type="checkbox"/> YES <input type="checkbox"/> NO
Do you live in Southern California?*	<input type="checkbox"/> YES <input type="checkbox"/> NO
Do you provide paid services to clients of Inland Regional Center (answer 'no' if you are a family member who provides respite/transportation.)?*	<input type="checkbox"/> YES <input type="checkbox"/> NO
Are you a professional, outside of the regional center system, working with individuals who have a developmental disability?*	<input type="checkbox"/> YES <input type="checkbox"/> NO

This list has a privacy policy. This form may be returned by mail to: Inland Regional Center, Attention: Diane Kimble, PO Box 6127, San Bernardino, CA 92412-6127. Please visit our website at www.InlandRC.org.

(*) Indicates a required field.

**APPENDIX III
SPECIAL EDUCATION**

18 Tips for Getting Quality Special Education Services for Your Child

By Ellen S. Goldbatt, Senior Attorney, Protection & Advocacy, Inc

Before the IEP Meeting:

1. Request Needed Assessments in Writing or Get Independent Assessments
2. Ask to Obtain Assessment Reports One Week before IEP Meeting
3. Plan for the Meeting with a Friend or Advocate
4. Consider Full Inclusion or Increased Integration
5. Make a List of the Points You Want to Raise at the IEP Meeting

At the IEP Meeting:

1. Bring a Friend, Advocate and/or a Person Who Knows Your Child
2. Don't Be Afraid to Ask Questions, Make Sure You Understand Any "Jargon"
3. Discuss Present Level of Your Child's Performance
4. Develop Annual Goals and either Short-term Objectives or a Schedule of Progress Reports to Monitor Your Child's Progress
5. Identify Full Inclusion or Integration Opportunities and the Supports Needed for Success
6. Describe the Placement for Your Child and Identify Specifically the Supports and Related Services Needed
7. Sign the IEP Only If You Are Satisfied

After the IEP Meeting:

1. Meet Your Child's Teacher(s) at the Beginning of the Year – Be a Classroom Volunteer If Possible and/or Participate in School Activities
2. Support Your Child in Developing Friendships with Her Classmates
3. Monitor Your Child's Progress

If Things Don't Work Out:

1. You Can File a Complaint If the School District Does Not Follow the Rules or Fails to Provide Services Required in a Signed IEP
2. You Can File for a Due Process Hearing If You and the School District Cannot Agree on the Special Education Services Appropriate for Your Child

SAMPLE LETTER:
Request for IEP Meeting

Ms. Bev Blue
Address
City, CA Zip Code
Telephone Number

Date
Mr. Gary Green
Director of Special Education
Local Unified School District
Address
City, CA Zip Code
Re: John Blue

Dear Mr. Green:

I am the parent of John Blue, who is currently enrolled in 5th grade at Regular Elementary School in the special day class for disabled students with learning disabilities.

I am requesting that an IEP meeting be held for my son as soon as possible. He has been having some problems at school and has been suspended once. I think his program may need to be modified to address his individual needs.

I am also requesting that a behavioral assessment be completed before the meeting and that I receive a copy of this assessment and all of John's school records regarding the suspension prior to the IEP meeting.

Since I work in the afternoon, a morning IEP meeting would be convenient for me. If you have any questions or need to discuss this letter further, please call me at work at 555-5555.

Thank you in advance for your prompt action regarding this request.

Sincerely,
Bev Blue

NOTE TIME LINES: *If you are requesting an IEP meeting without the need for new assessments for a child already in special education, the IEP meeting shall be held within **30 days** from the date of receipt of your written request [Cal Ed Code Sec. 56343.5]. If you are requesting an IEP with a need for a new assessment, the assessment(s) must be completed and the IEP developed at the an IEP meeting within **50 school calendar days** from the date of receipt of your written notice [Cal Ed Code Sec 56344].*

**SAMPLE LETTER:
Compliance Complaint**

Ms. Bev Blue
Address
City, CA Zip Code
Telephone Number

Compliant Management and Medication Unit
Special Education Division
California State Department of Education
1430 N Street, Suite 2401
Sacramento, CA 95814

Date

Dear Sir or Madam:

This is a special education compliance complaint. [5 CCR Sec 4600 and following.] I feel that Local Unified School District (LUSD) is out of compliance with federal and state special education laws.

My child's name is John, and he is seven years old. He is developmentally delayed and has a physical disability, which requires him to use crutches. I had the following problems with my school district:

NOTE: Pick the problems that apply to your child's situation. If you have a different problem from those listed describe the situation fully and include the part of the law that has been violated. If you do not know the law that has been violated, the Compliance Unit should match the correct law to your situation. You can contact the Compliance Unit at **1-800-926-0648**.

- (1) I never consented to psychological assessments done by the district on January 21, 2006. [Failure to get written parental consent for assessment, Cal Ed Code Sec 56321]
- (2) When I asked the district for a copy of the test done by the psychologist, they refused to give me a copy. [Failure to provide parent with requested records, Cal Ed Code Sec 56504; 34 CFR Sec 300.502]
- (3) At the February 8, 2006, IEP meeting, LUSD refused to write down in the IEP the need for, and frequency and duration of, physical therapy services (related services). [Failure to provide frequency and duration of related service, 5 CCR Sec 3051; 34 CFR Sec 300-346]
- (4) John's IEP states that he will have lunch and music class with non-disabled students, but the district has not provided these opportunities. [Failure to implement the IEP, Cal Ed Code Sec 56345; failure to provide least restrictive environment, Cal Ed Code Sec 56364; 34 CFR Sec 300.550-553]
- (5) John's IEP states that he is to receive speech therapy twice a week for 30 minutes but LUSD says they do not have a therapist available. [Failure to implement the IEP, Cal Ed Code Sec 56345]

In order to resolve this complaint, I am asking for the following remedies:

- (1) Allow me to access to my child's records;
- (2) Get my consent before future assessments;
- (3) Order the district to allow John to have lunch and music class with nondisabled students as per his IEP;
- (4) Modify the IEP to state that physical therapy three times per week, 30 minutes per week must be provided; and,
- (5) Immediately begin the twice weekly speech therapy sessions specified in John's IEP.

I have enclosed a copy of my child's IEP and a letter to the district asking for a copy of the psychologist's report.

Because my complaint involves a matter which calls for direct State Department of Education intervention pursuant to Title 5 Cal Code of Regulations Section 4650(a)(viii)© [if it involves immediate physical danger or threat to children]. (D) [if it involves non-implementation of a student's IEP], or (E) [if it involves a violation of federal special education statute or regulation], I have not filed with the local education agency. Rather, I request direct state intervention in this matter.

I ask for immediate investigation and resolution, as my child cannot afford to wait for these services. Thank you for your assistance.

Very truly yours,
Bev Blue

NOTE TIME LINES: *If you have not heard from the Compliance Unit within 10 days after you mail your complaint, we recommend that you call to follow up at (916) 445-4632 or (800) 926-0648*

California Department of Education
Procedural Safeguards Referral Service

Special Education Division
Revised 11/2006

REQUEST FOR COMPLAINT INVESTIGATION

PLEASE NOTE: A complaint may be filed through the use of this form or by a written letter sent by fax or postal mail. E-mails cannot be accepted as formal complaints because they do not meet signature requirements under 34 C.F.R. 300.153(b)(3). If upon analysis of a request, a complaint is opened, a complaint investigation will be completed within 60 days of receipt in the California Department of Education (CDE) Special Education Division Procedural Safeguards Referral Service (PSRS) of all required information.

The written complaint must specify at least one alleged violation of state and/or federal special education laws that occurred not more than one year prior to the date the complaint is received by the CDE. The party filing a complaint must forward a copy of the complaint to the LEA or public agency serving the child at the same time the party files a compliance complaint with the CDE. [34 Code of Federal Regulations (CFR) 300.153(d)]

Please return the completed form to: California Department of Education; Special Education Division; Procedural Safeguards Referral Service; 1430 N Street; Suite 2401; Sacramento, CA 95814; Phone: (800) 926-0648; FAX: (916) 327-3704

Name of School District or other Public Educational Agency that allegedly violated state and/or federal special education laws:

Complainant Contact Information:

Name _____

Address _____

City _____, CA Zip Code _____

Phone Numbers (Please note the best time to call):

(day) _____ (evening) _____

(work) _____ ext. _____ (fax) _____

Parent/Guardian Information (if different from above):

Name(s) _____

Address _____

City _____, CA Zip Code _____

Parent/Guardian Phone Numbers (if phone contact is permitted, please indicate the best time to call):

(day) _____ (evening) _____

(work) _____ ext. _____ (fax) _____

Student Information (If alleging violations with respect to a specific child):

Name _____

Date of Birth _____ Current Grade Level _____

Address Where Student Resides (If different from Parent/Guardian information):

Address _____

City _____, CA Zip Code _____

School of Attendance (required) _____

SAMPLE LETTER:
Due Process Hearing Request

Ms. Bev Blue
Address
City, CA Zip Code
Telephone Number

Date
Special Education Hearing Office
Institute for Administrative Justice
Mc George School of Law
3200 Fifth Avenue
Sacramento, CA 95817
Re: Due Process Hearing

Dear Sir or Madam:

I am writing to request a due process fair hearing for my son, John Blue. His address is [address]. His date of birth is [date]. He is in the [grade level] grade. He is attending [name of school district] district. He resides in the [name of the school district in which the child resides] school district. I am the parent [or guardian] of John blue and my residence address and telephone number are as noted above.

Besides the [name] school district, the [name of other public agency involved in the assessment or provision of special education or related services to the pupil] is involved in John's IEP.

I am requesting this due process proceeding because [explanation of disputed issues involved]. I believe these disputed issues could be resolved if [explanation of your proposed resolutions to each disputed issue described above].

As noted below, I have sent a copy of this letter to [name of applicable school district special education official]. Please send me a copy of the Special Education Hearing Office Notice of Procedural Safeguards and any amendments or subsequent revisions of the Notice. Please contact me as soon as possible to advise me of the dates of the due process hearing and name and telephone number of the proposed mediator.

Sincerely,
Bev Blue

cc: [name of applicable school district superintendent to whom copy of this letter has been sent.]

NOTE: You can also use your school district's form for requesting a due process hearing, if your district has one, if the form contains all the information included above. You should send a courtesy copy of your request for a due process fair hearing to the superintendent of the school district.

